

Green Laser Series



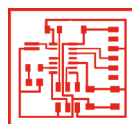
Description

RMI Laser's Green Laser Marker Series is designed to mark highly reflective materials or highly sensitive substrates like silicon wafers with ease and precision. They operate in the visible light spectrum at 532 nm (Green). The Green Laser Series is available in 5 watts with an industry leading complete 3 year warranty.

The green laser marker is perfect for softer plastics, PCB Boards, IC Chips and for scribing or marking of Solar Cells of various material compositions. RMI Laser was one of the pioneers of green laser marker technology, and we've used that experience to develop a green laser that meets the special needs of semiconductor and solar marking applications.

Benefits

- Best Priced "Green" Laser Marker on the Market
- Low Thermal Transfer for Sensitive Substrates
- Micro Marking Capabilities (< 1 mm Text or Coding & 10 um spot size)
- Ideal for Marking Semiconductor Components



Specialty

The inherent advantages of the 532 nm wavelength are greater absorption across a wider range of materials, along with mitigated thermal energy allowing it to mark substrates that 1064 nm Near-IR lasers simply cannot.



Plug and Play

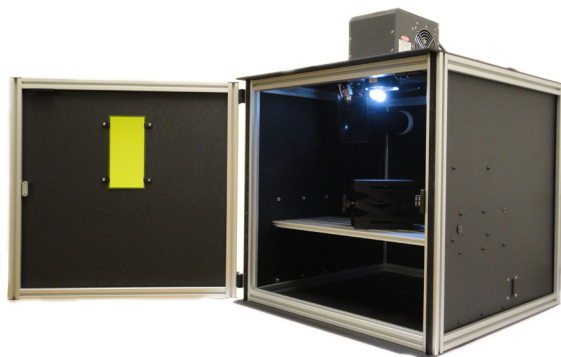
With our Class I Enclosures and professional installation, setting up your RMI Laser is simple and easy. Experience out-of-the-box and marking in less than an hour!



Laser Marker Head

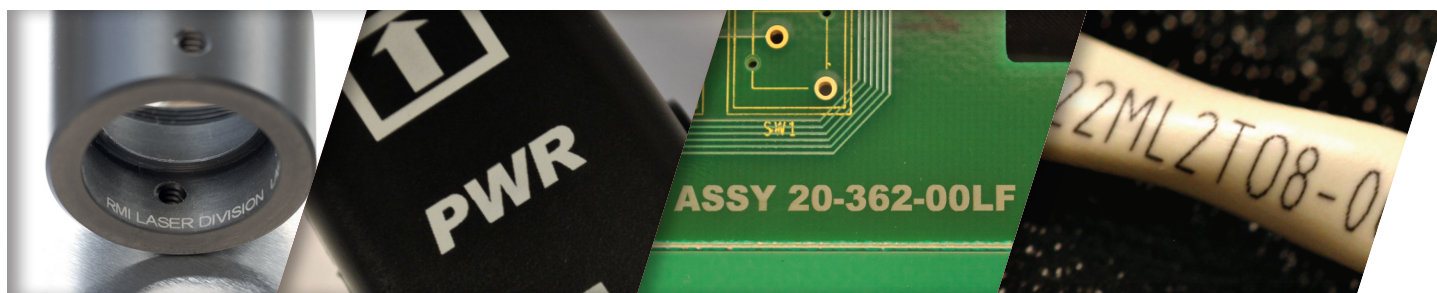


Controller



Class I Workstation

Marking Samples

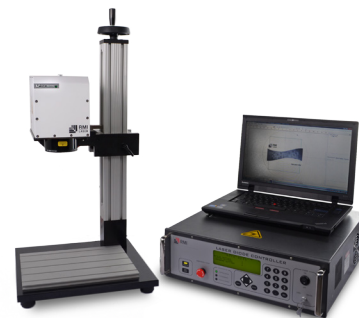


Green Laser Marking System

	U-5G
Laser Source Built-in	Diode Pumped Nd:YVO4
Wavelength	532 nm
Laser Source Output	6 W
Peak Power	30 kW
Pulse width	~14 ns @ 10 kHz
100mm F-Theta Lens: Beam Spot Diameter Max Marking Area	~20 µm 2.56 x 2.56" 65 x 65 mm
165mm F-Theta Lens: Beam Spot Diameter Max Marking Area	~30 µm 4.13 x 4.13" 105 x 105 mm
254mm F-Theta Lens: Beam Spot Diameter Max Marking Area	~40 µm 5.91 x 5.91" 150 x 150 mm
330 mm F-Theta Lens: Beam Spot Diameter Max Marking Area	
420 mm F-Theta Lens: Beam Spot Diameter Max Marking Area	
Lenses available (focal length)	100, 165, 254 mm
Cooling System	Air-cooled
Operational Temp Range*	~10 - 40 °C (~ 50 – 104 °F)
Operational Humidity Range*	80% non-condensing
Weight	6.5 kg (14.33 lbs)
Dimensions LxWxH**	229 x 142 x 163 mm (9.0 x 5.6 x 6.41 in.)

Green Laser Configuration Options

- Available with 100 mm, 165 mm, 254 mm F-Theta Lenses
- Class IV or Class I Configurations
- Plug and Play Rotary Chuck Adaptation
- Custom Optics: Add a Waveplate, Change the Beam Expander, or 60 mm F-Theta Lens



Class IV Setup