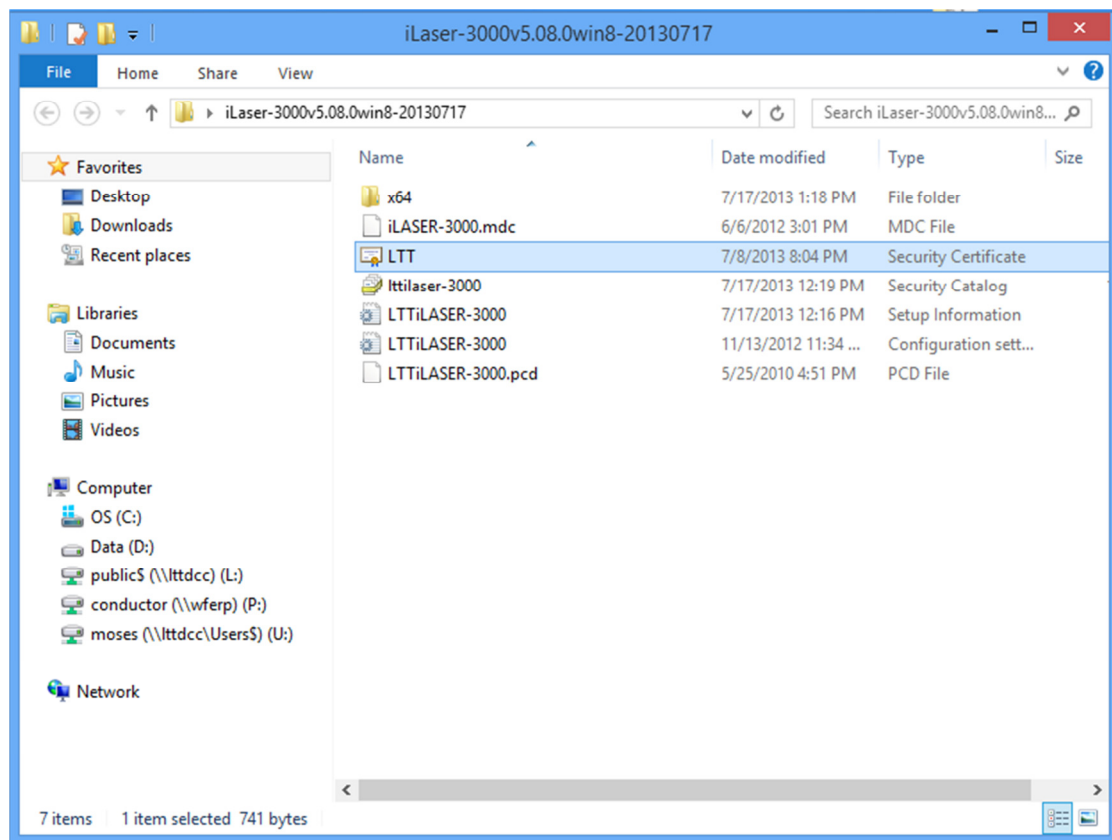


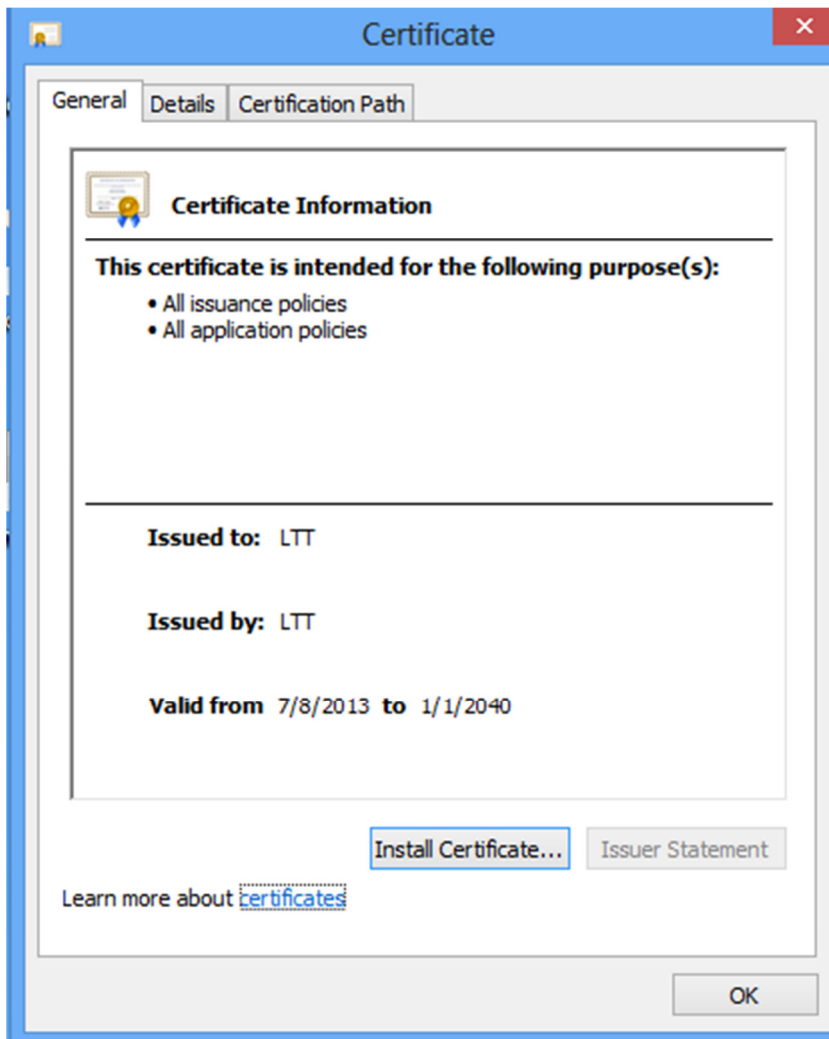
How to install a certificate

Before you install a LTT driver for Windows 8, you have to install a certificate of LTT as following steps:

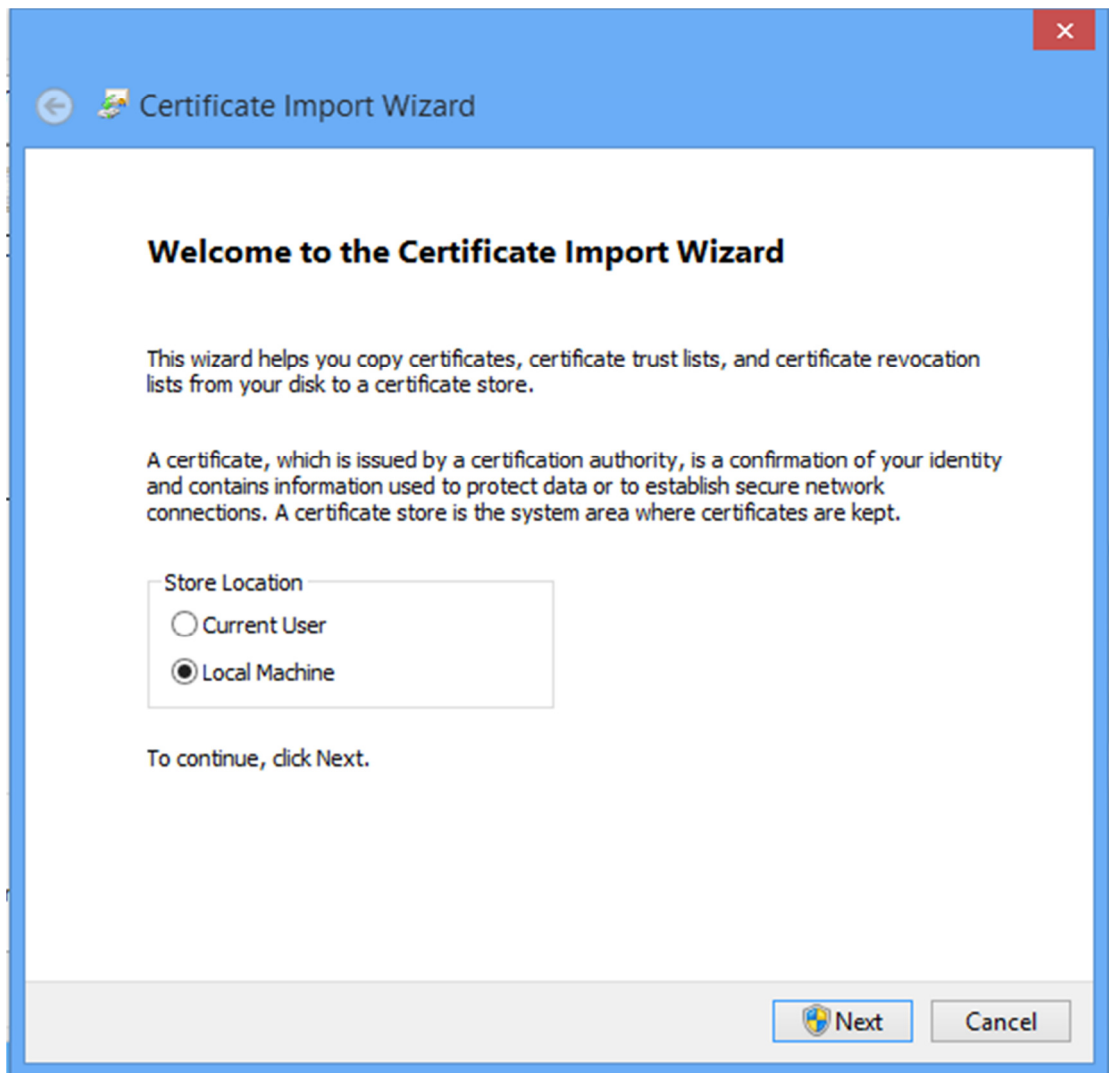
- 1) Open driver file folder, you will find a LTT.cer file as following, double click this file.



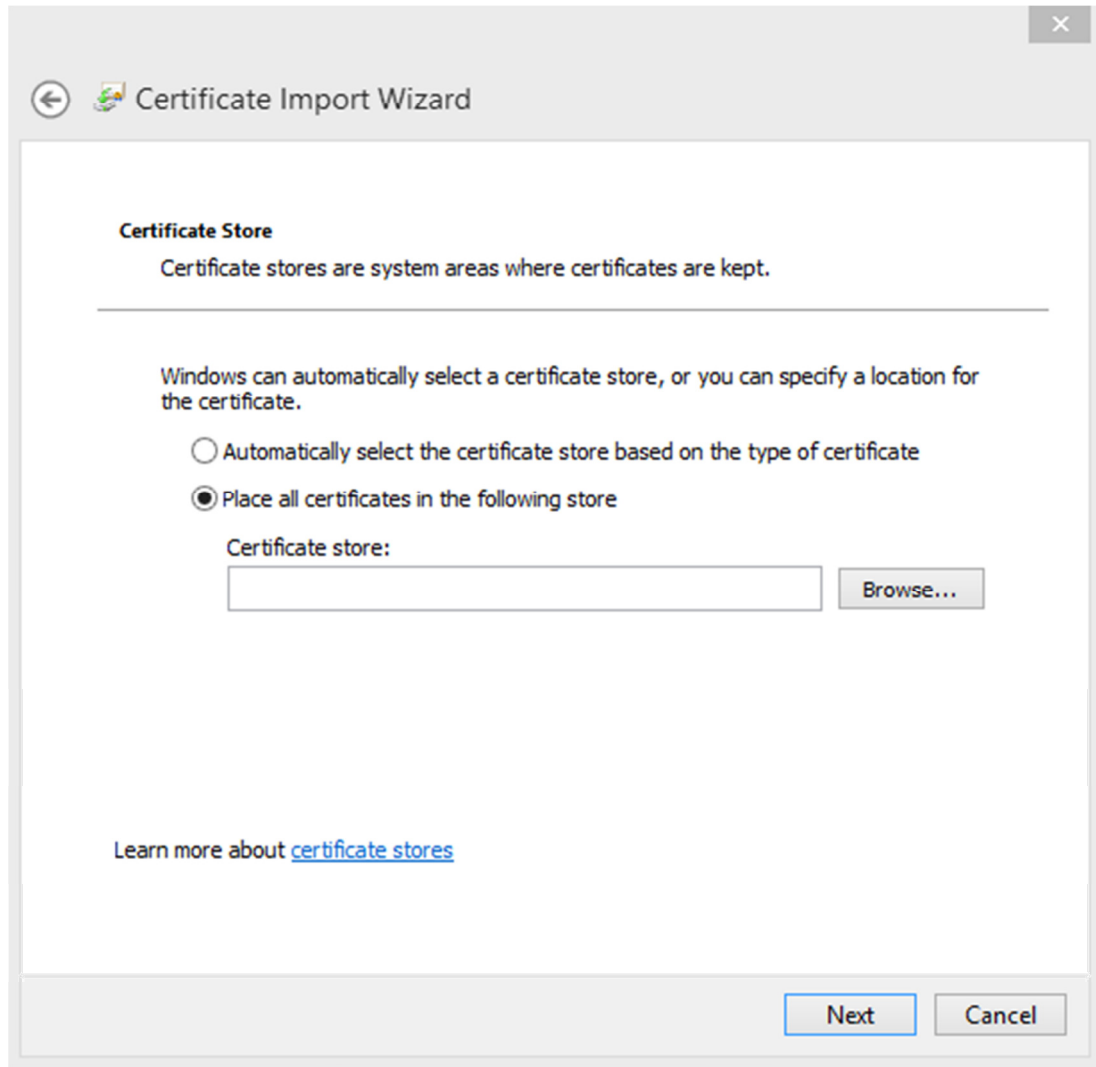
2) You will see following screen, you press the “Install Certificate” bottom.



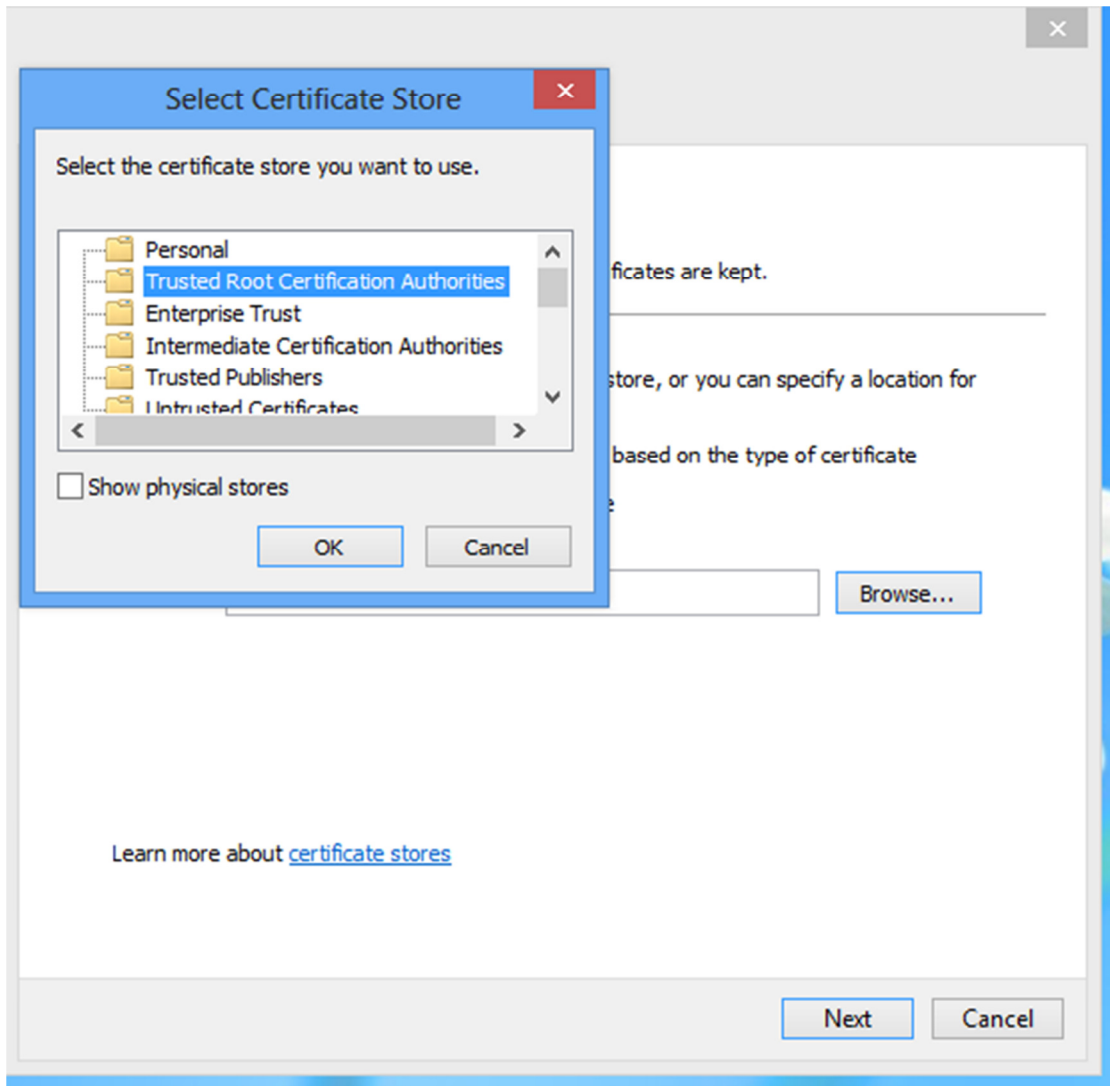
3) You choice "Local Machine" and press "Next" bottom.



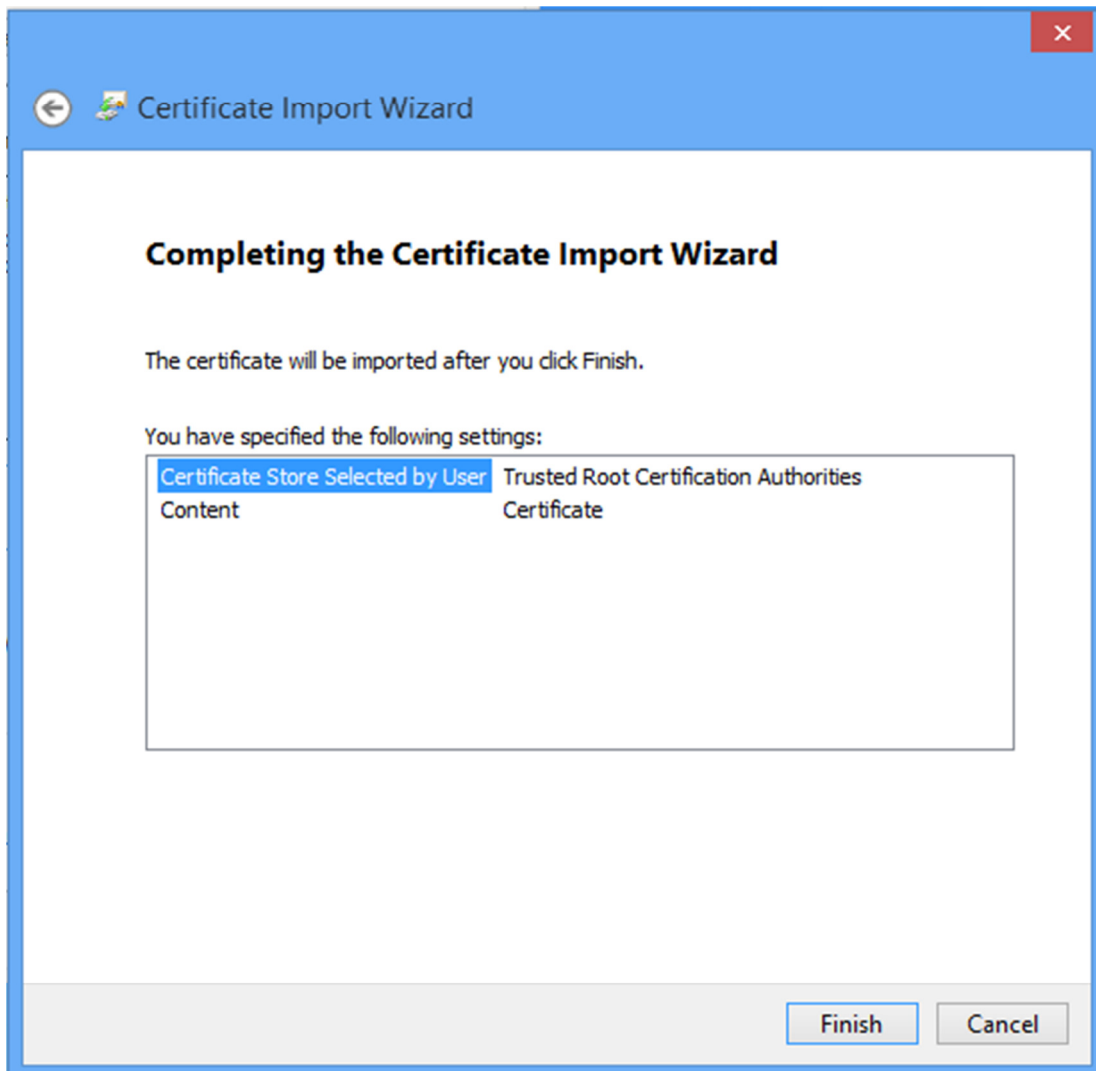
- 4) You choice “Place all certificates in the following store”, then press “Browse” bottom.



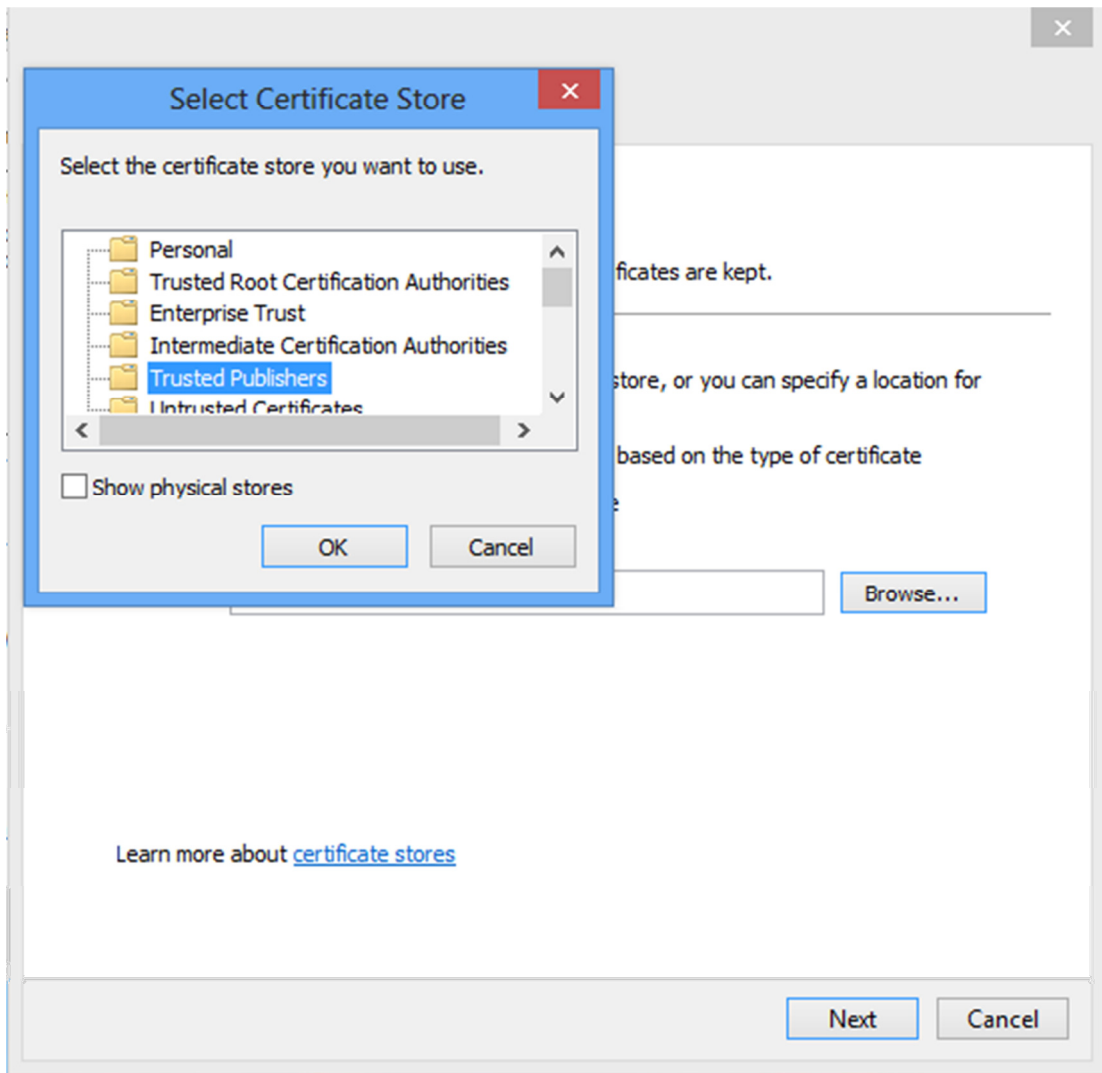
- 5) You have to choice “Trusted Root Certification Authorities” as Selected Certificate Store, and press “OK” button. Then Press “Next” bottom afterward.



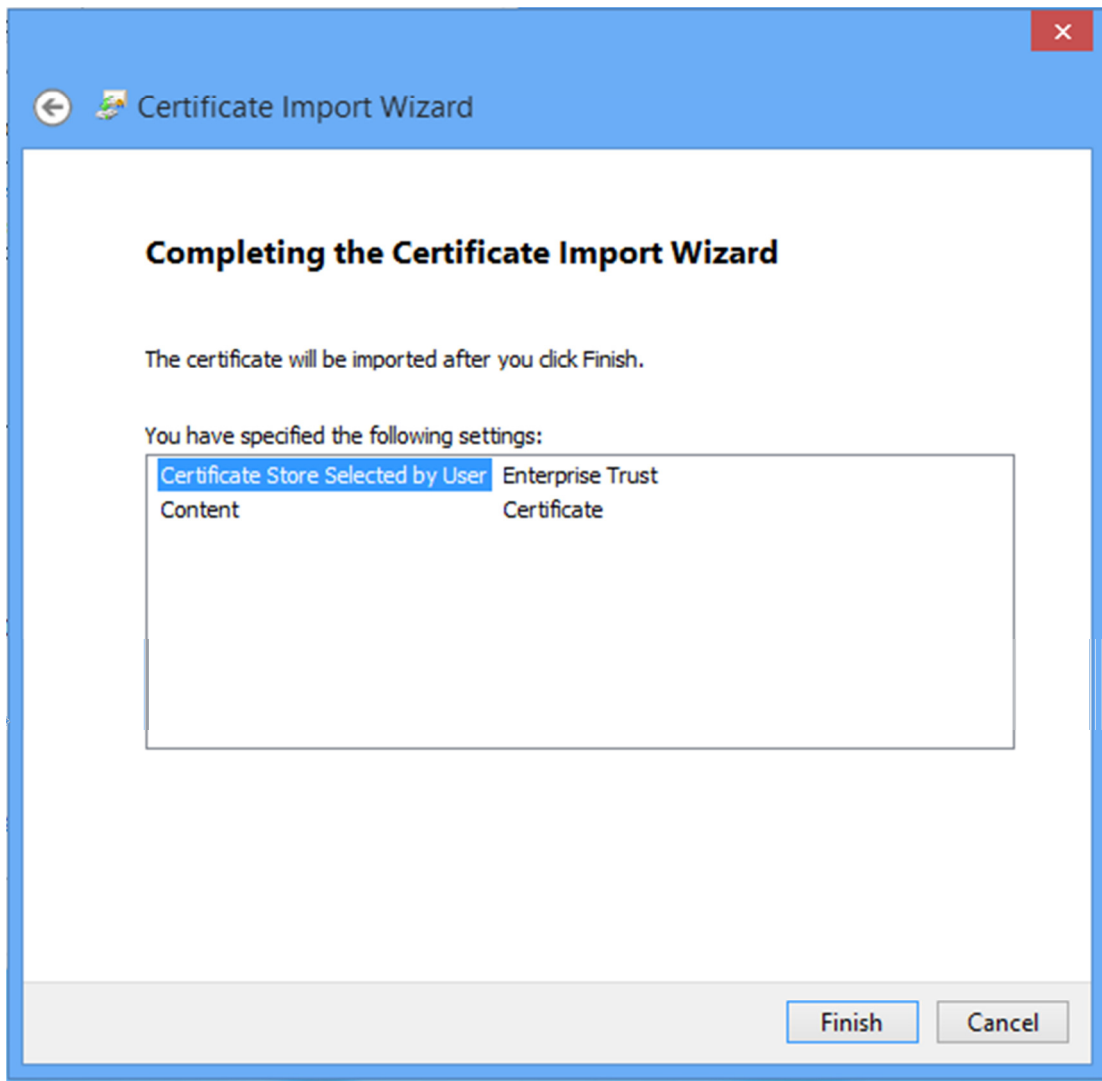
6) You will see following screen and press "Finish".



- 7) Go through step #2 to step #4 again. You will choose “Trusted Publisher” Select Certificate Store” this time and press “OK” bottom. Then press “ Next “ bottom afterward.



8) You will see the following screen, you will press "Finish".



9) Now you have finished the installation of LTT.cer job. You can leave this certificate by press "OK"

